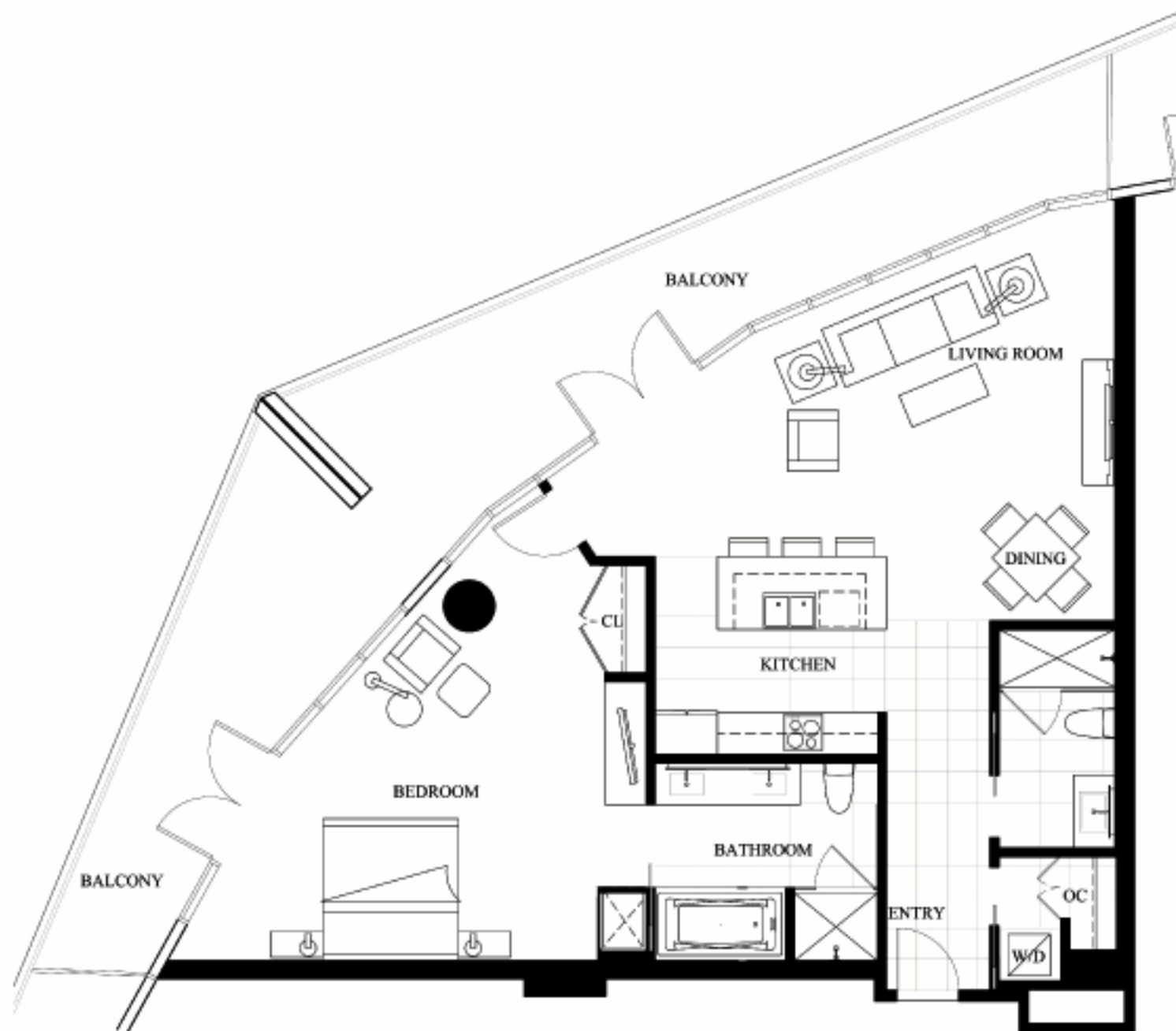


# TOWER 2 FLOORPLANS

THE BUNGALOWS RESIDENCES FLATS AT THE **HARD ROCK**



ONE BEDROOM A

1,757 SQUARE FEET INCLUDING BALCONY

BUILDING, FLOOR AND UNIT PLANS, PRICING, ARCHITECTURAL RENDERINGS, SPECIFICATIONS, LOCATIONS AND FACILITIES, AND FURNITURE, FIXTURES AND EQUIPMENT ARE INDICATIVE ONLY AND SUBJECT TO CHANGE WITHOUT NOTICE IN THE DEVELOPER'S SOLE AND ABSOLUTE DISCRETION. DEVELOPER RESERVES DEVELOPMENTAL RIGHTS FOR ALL AREAS SHOWN HEREON. SCENES OF IMPROVEMENTS DEPICTED IN THE PICTURES ARE ARTIST'S RENDERINGS ONLY AND NEED NOT BE BUILT.

# TOWER 2 FLOORPLANS

THE BUNGALOWS RESIDENCES FLATS AT THE **HARD ROCK**



STUDIO A

699 SQUARE FEET INCLUDING BALCONY

BUILDING, FLOOR AND UNIT PLANS, PRICING, ARCHITECTURAL RENDERINGS, SPECIFICATIONS, LOCATIONS AND FACILITIES, AND FURNITURE, FIXTURES AND EQUIPMENT ARE INDICATIVE ONLY AND SUBJECT TO CHANGE WITHOUT NOTICE IN THE DEVELOPER'S SOLE AND ABSOLUTE DISCRETION. DEVELOPER RESERVES DEVELOPMENTAL RIGHTS FOR ALL AREAS SHOWN HEREON. SCENES OF IMPROVEMENTS DEPICTED IN THE PICTURES ARE ARTIST'S RENDERINGS ONLY AND NEED NOT BE BUILT.

# TOWER 2 FLOORPLANS

THE BUNGALOWS RESIDENCES FLATS AT THE **HARD ROCK**



STUDIO B

685 SQUARE FEET INCLUDING BALCONY

BUILDING, FLOOR AND UNIT PLANS, PRICING, ARCHITECTURAL RENDERINGS, SPECIFICATIONS, LOCATIONS AND FACILITIES, AND FURNITURE, FIXTURES AND EQUIPMENT ARE INDICATIVE ONLY AND SUBJECT TO CHANGE WITHOUT NOTICE IN THE DEVELOPER'S SOLE AND ABSOLUTE DISCRETION. DEVELOPER RESERVES DEVELOPMENTAL RIGHTS FOR ALL AREAS SHOWN HEREON. SCENES OF IMPROVEMENTS DEPICTED IN THE PICTURES ARE ARTIST'S RENDERINGS ONLY AND NEED NOT BE BUILT.

# TOWER 2 FLOORPLANS

THE BUNGALOWS RESIDENCES FLATS AT THE **HARD ROCK**



SUITES A

1,427 SQUARE FEET INCLUDING BALCONY

BUILDING, FLOOR AND UNIT PLANS, PRICING, ARCHITECTURAL RENDERINGS, SPECIFICATIONS, LOCATIONS AND FACILITIES, AND FURNITURE, FIXTURES AND EQUIPMENT ARE INDICATIVE ONLY AND SUBJECT TO CHANGE WITHOUT NOTICE IN THE DEVELOPER'S SOLE AND ABSOLUTE DISCRETION. DEVELOPER RESERVES DEVELOPMENTAL RIGHTS FOR ALL AREAS SHOWN HEREON. SCENES OF IMPROVEMENTS DEPICTED IN THE PICTURES ARE ARTIST'S RENDERINGS ONLY AND NEED NOT BE BUILT.

# TOWER 2 FLOORPLANS

THE BUNGALOWS RESIDENCES FLATS AT THE **HARD ROCK**



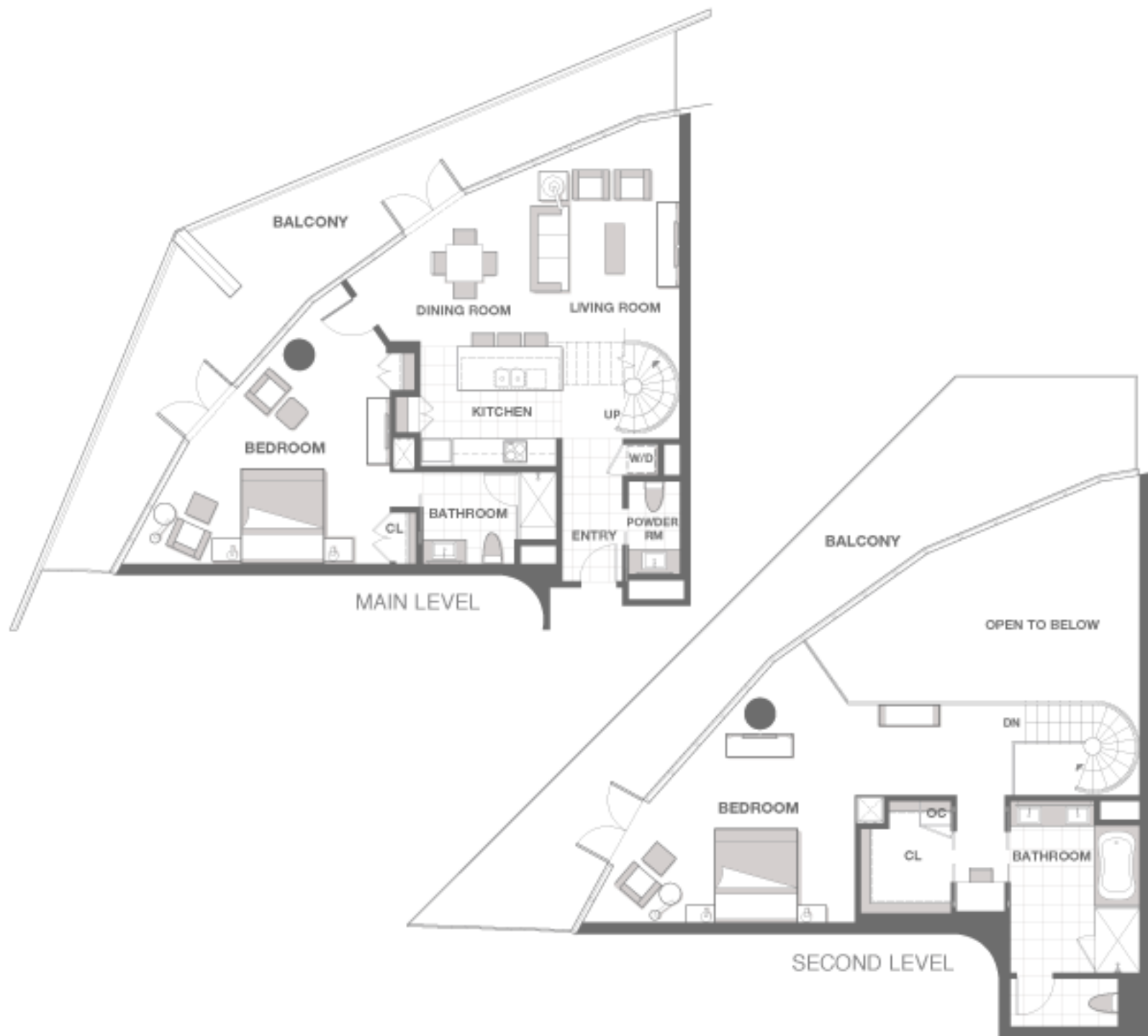
SUITES B

1,310 SQUARE FEET INCLUDING BALCONY

BUILDING, FLOOR AND UNIT PLANS, PRICING, ARCHITECTURAL RENDERINGS, SPECIFICATIONS, LOCATIONS AND FACILITIES, AND FURNITURE, FIXTURES AND EQUIPMENT ARE INDICATIVE ONLY AND SUBJECT TO CHANGE WITHOUT NOTICE IN THE DEVELOPER'S SOLE AND ABSOLUTE DISCRETION. DEVELOPER RESERVES DEVELOPMENTAL RIGHTS FOR ALL AREAS SHOWN HEREON. SCENES OF IMPROVEMENTS DEPICTED IN THE PICTURES ARE ARTIST'S RENDERINGS ONLY AND NEED NOT BE BUILT.

# TOWER 2 FLOORPLANS

THE BUNGALOWS RESIDENCES FLATS AT THE **HARD ROCK**



SUITES C

3,420 SQUARE FEET INCLUDING TERRACE

BUILDING, FLOOR AND UNIT PLANS, PRICING, ARCHITECTURAL RENDERINGS, SPECIFICATIONS, LOCATIONS AND FACILITIES, AND FURNITURE, FIXTURES AND EQUIPMENT ARE INDICATIVE ONLY AND SUBJECT TO CHANGE WITHOUT NOTICE IN THE DEVELOPER'S SOLE AND ABSOLUTE DISCRETION. DEVELOPER RESERVES DEVELOPMENTAL RIGHTS FOR ALL AREAS SHOWN HEREON. SCENES OF IMPROVEMENTS DEPICTED IN THE PICTURES ARE ARTIST'S RENDERINGS ONLY AND NEED NOT BE BUILT.